

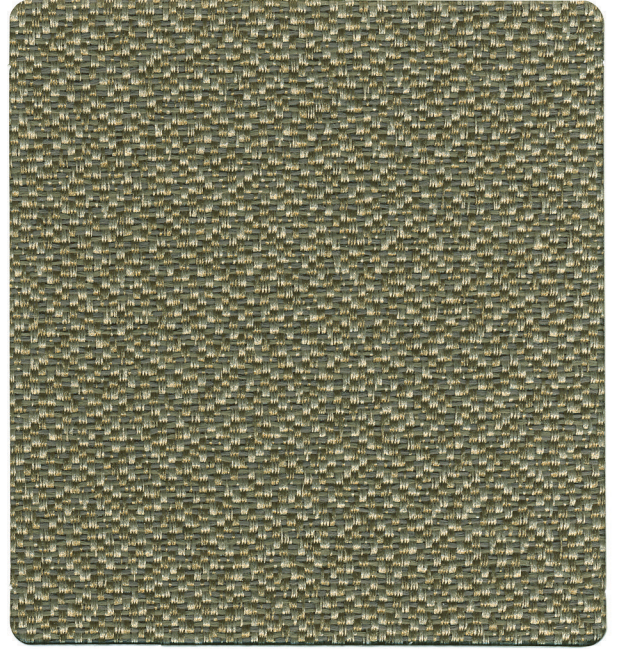
7242 Saddle



7238 Almond



7239 Wheat



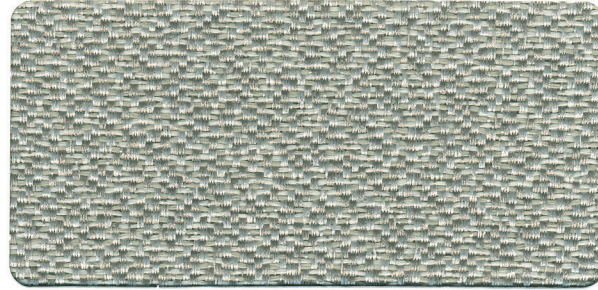
7241 Rye



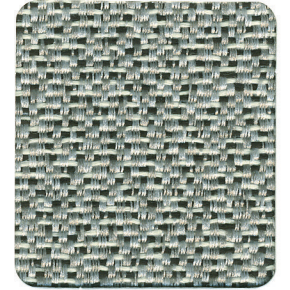
7240 Opal



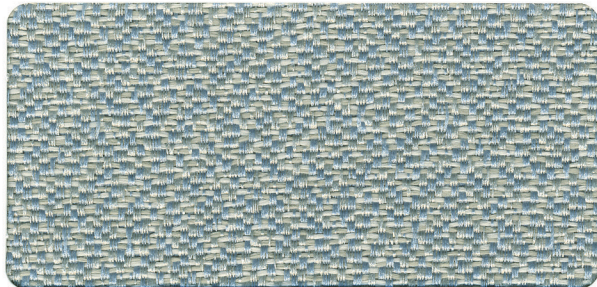
7237 Mineral



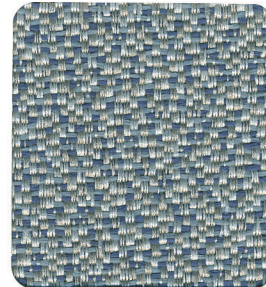
7246 Haze



7245 Flint



7244 Chambray



7243 Oasis

MIDWAY

VERTICAL SURFACE FABRIC



FABRIC SPECIFICATIONS

Content	Weight Per Lin Yd	Ends / Picks	Directional	Flammability	Cleaning Code
100% Polyester	10.65 oz	144 / 34	Yes	ASTM E-84 California Bulletin 117-E	W-S

Roll Width - 66"

Midway **meets or exceeds** ACT® Performance Guidelines.



*ACT® Registered Certification Marks

Please visit our website www.burchfabrics.com for full specification information as well as cleaning guidelines.



Midway is a directional fabric.
Please use caution when cutting and applying.



U.L. Recognized Component: **Midway** can be applied without need for further testing to any office panel system which has been authorized for use with fabrics included in UL's Fabric Recognition Program.



All colors of **Midway** are part of **Burch Fabrics Group's Lightning Collection**.
The **Lightning Collection** combines a wide array of heavily stocked skus with quick delivery.



BURCH FABRICS GROUP

4200 Brockton Drive SE
Grand Rapids, MI 49512
p 800.841.8111
f 616.698.0011
www.burchfabrics.com