

CHAIN LINK
7420 CANVAS



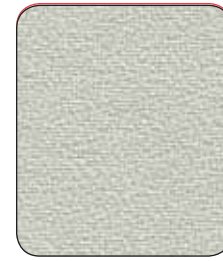
COLUMBUS
7920 STRAW



DAYTON
7115 STRAW



DAYTON
7117 GOLDEN



FOUNDATION
7958 STONE



DAYTON
7112 SILVER



COLUMBUS
7924 FOG



SHINE
9642 BISCUIT



CHAIN LINK
7421 NATURAL



COLUMBUS
7921 CITRUS



COLUMBUS
7922 SILVER



CHAIN LINK
7425 STEEL



COLUMBUS
7923 STONE



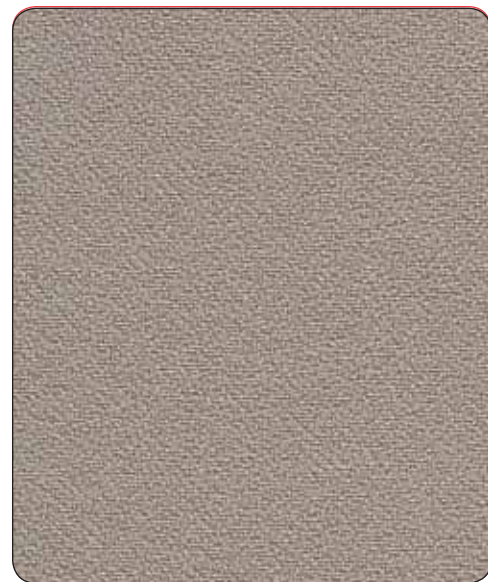
FOUNDATION
7961 SEAGULL



COLUMBUS
7919 KHAKE



DAYTON
7116 BLUSH



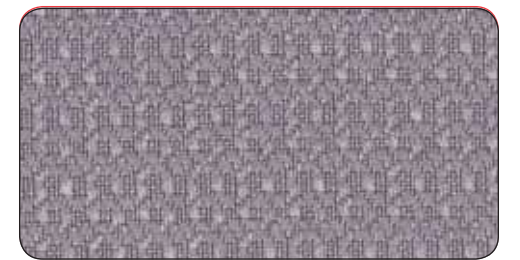
FOUNDATION
7959 SAND



DAYTON
7113 FOG



COLUMBUS
7925 MIDNIGHT



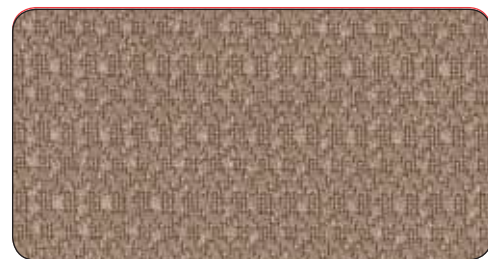
CHAIN LINK
7424 CHARCOAL



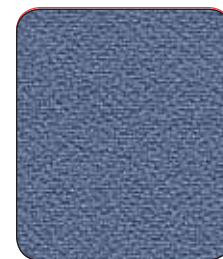
DAYTON
7118 HONEY



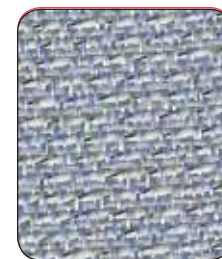
FOUNDATION
7954 TAUPE



CHAIN LINK
7422 COCOA



FOUNDATION
7960 SKY



DAYTON
7114 OCEAN



CHAIN LINK
7423 COLONIAL



FOUNDATION
7955 CADET



CHAIN LINK
 COLUMBUS
 DAYTON
 FOUNDATION
 SHINE

CHAIN LINK | COLUMBUS | DAYTON | FOUNDATION | SHINE

FABRIC SPECIFICATIONS

CONTENT	100% POLYESTER	100% POLYESTER	100% POLYESTER	100% POLYESTER	56% OLEFIN, 44% POLYESTER
WEIGHT	11.2 OZ/LIN YD	10.24 OZ/LIN YD	12.71 OZ/LIN YD	9.6 OZ/LIN YD	10.2 OZ/LIN YD
ENDS/PICKS	56/57 PER INCH	78/20 PER INCH	44/46 PER INCH	56/53 PER INCH	80/19 PER INCH
CLEANING CODE	W	W-S	W-S	S	W
WIDTH	66"	66"	66"	66"	66"
ORIGIN	USA	CHINA	CHINA	USA	USA

PERFORMANCE CHARACTERISTICS

TENSILE STRENGTH ASTM D1682/D5034	WARP: 276.0 LBS. FILL: 259.0 LBS.	WARP: 123.0 LBS. FILL: 130.0 LBS.	WARP: 90.0 LBS. FILL: 110.0 LBS.	WARP: 227.0 LBS. FILL: 191.0 LBS.	WARP: 50.0 LBS. FILL: 50.0 LBS.
TEAR STRENGTH ASTM D2261/2	WARP: 23.0 LBS. FILL: 20.3 LBS.	WARP: 24.6 LBS. FILL: 22.8 LBS.	WARP: 33.9 LBS. FILL: 31.7 LBS.	WARP: 14.56 LBS. FILL: 15.62 LBS.	WARP: 8.0 LBS. FILL: 8.0 LBS.
COLORFASTNESS TO LIGHT AATCC 16/16A	40 HRS. CLASS 4	40 HRS. CLASS 5	40 HRS. CLASS 4.5	40 HRS. CLASS 4	40 HRS. CLASS 5
COLORFASTNESS TO CROCKING AATCC 8	4.0 DRY, 4.0 WET	5.0 DRY, 5.0 WET	4.5 DRY, 4.0 WET	4.5 DRY, 4.5 WET	4.0 DRY, 4.0 WET

FLAMMABILITY

ASTM E-84 (TUNNEL TEST)	CLASS A OR 1	CLASS A OR 1	CLASS A OR 1	CLASS A OR 1	NOT TESTED
CAL. TECHNICAL BULLETIN 117-E SEC. E (CS-191-53)	PASSES	NOT TESTED	PASSES	NOT TESTED	PASSES

RECOMMENDED CLEANING CARE

W	WATER-BASED CLEANING AGENTS AND FOAM MAY BE USED FOR CLEANING. CLEANING BY A PROFESSIONAL CLEANING SERVICE IS RECOMMENDED.
W-S	WATER-BASED CLEANING AGENTS AND FOAM MAY BE USED FOR CLEANING. THIS FABRIC MAY ALSO BE CLEANED WITH MILD, WATER-FREE SOLVENTS. CLEANING BY A PROFESSIONAL CLEANING SERVICE IS RECOMMENDED.
S	CLEAN THIS FABRIC WITH PURE SOLVENTS (PETROLEUM DISTILLATE-BASED PRODUCTS, ENERGIE, CARBONA, RENUZIT, OR SIMILAR PRODUCTS MAY BE USED), IN A WELL-VENTILATED ROOM. CLEANING BY A PROFESSIONAL FURNITURE CLEANING SERVICE ONLY IS RECOMMENDED.

VARIATIONS IN COLOR AND TEXTURE ARE INHERENT TO THESE TEXTILES.
 APPLICATION TESTING OF THIS PRODUCT IS RECOMMENDED.

 **CHAIN LINK, COLUMBUS, DAYTON AND SHINE** ARE DIRECTIONAL FABRICS. PLEASE USE CAUTION WHEN CUTTING AND APPLYING.

 U.L. RECOGNIZED COMPONENT: **CHAIN LINK, COLUMBUS, DAYTON AND FOUNDATION** CAN BE APPLIED WITHOUT NEED FOR FURTHER TESTING TO ANY OFFICE PANEL SYSTEM WHICH HAS BEEN AUTHORIZED FOR USE WITH FABRICS INCLUDED IN UL'S FABRIC RECOGNITION PROGRAM.